



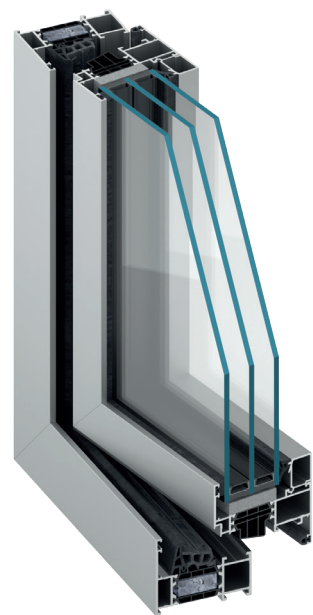
Window & door system

MB-79N E

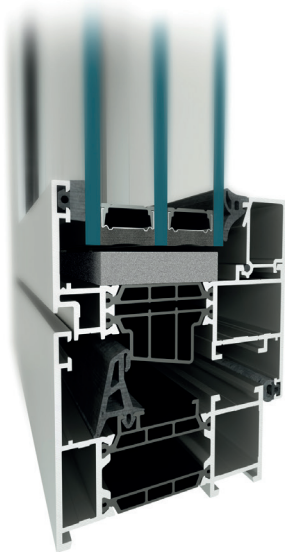
MB-79N ST

MB-79N SI

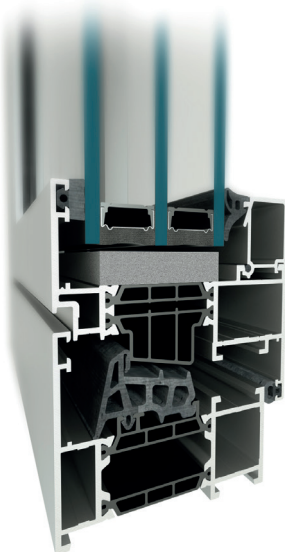
The MB-79N is a state-of-the-art and economical addition to the Aluprof window & door systems. It has been designed to outperform typical thermal insulation requirements. The MB-79N series can be used to fabricate fixed, side-hung, hopper, tilt-and-turn, and hopper-and-slide windows, as well as single and double exterior doors, and storefront solutions complete with doors. In addition to the economical version MB-79N E, featuring a one-component central seal, and the MB-79N ST version with a two-component central seal, Aluprof also offers the MB-79N SI variant with enhanced thermal insulation, and with profiles that come equipped with insulating inserts and a two-component central seal. For external doors, Aluprof also offers the MB-79N SI+ variant that comes with a central seal and insulating inserts inside the profiles.



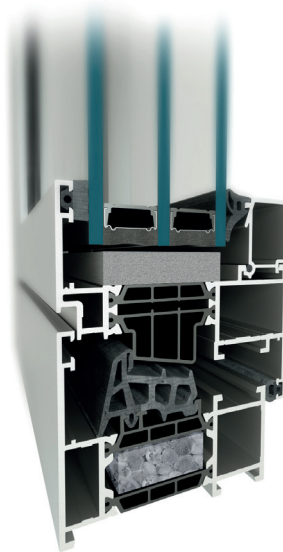
U_w from 0.64 W/(m²K)



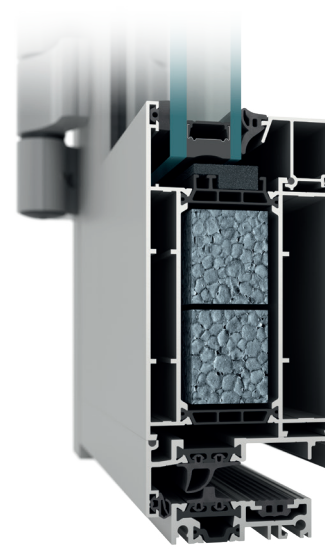
MB-79N E window



MB-79N ST window



MB-79N SI window



MB-79N SI+ door

FEATURES AND AESTHETICS

- profile depth: 79mm (casement) and 70mm (window frame and door leaf)
- thermal breaks made of an innovative material with a brand-new shape allow the use of a seal in the area of profile insulation, in both windows and doors
- windows in 3 thermal variants (MB-79N E, MB-79N ST, MB-79N SI) and doors in 4 thermal variants (MB-79N E, MB-79N ST, MB-79N SI and MB-79N SI+)
- thermal insulation: U_w starting from 0.64 W/(m²K), U_f starting from 0.83 W/(m²K)
- excellent kinematics enabling the fabrication of narrow, operable windows and doors
- door leaf profiles have isolation joint, which eliminates thermal stresses during operation
- possibility of using invisible hinges and the most popular multi-point hardware, including hidden fittings + state-of-the art AluPilot fittings; for doors, fittings with automation and access control functions are also available
- able to receive double or triple glazing, up to 63 mm for windows and 54 mm for doors, thus making it possible to use all common types of glass, including acoustic or burglar-resistant glass
- possibility to produce security doors rated RC1 - RC3, and panel doors in many highly aesthetic versions
- large selection & different styles of handles, including minimalist looking handles with or without rosette

SPECIFICATION DETAILS	MB-79N WINDOWS	MB-79N DOORS
Frame depth	70 mm	70 mm
Casement depth	79 mm	70 mm
Glazing thickness	frame: 1.5 – 54 mm, casement: 10.5 – 63 mm	frame: 1.5 – 54 mm
Max. casement size (H×L)	H up to 2700 mm, L up to 1350 mm H up to 2150 mm, L up to 1700 mm	H do 2800 mm, L do 1400 mm

TECHNICAL DATA	MB-79N WINDOWS	MB-79N DOORS
Air permeability	class 4, EN 12207	class 3, EN 12207
Water tightness	class E 1950, EN 12208	class 5A (200 Pa), EN 12208
Thermal insulation	U_w starting from 0.64 W/(m ² K)*, U_w starting from 0.73 W/(m ² K)**, U_f starting from 0.83 W/(m ² K) dla MB-79N SI, U_f starting from 1.21 W/(m ² K) for MB-79N E and MB-79N ST	U_f from 2.16 W/(m ² K) for MB-79N ST; from 1.76 W/(m ² K) for MB-79N SI; from 1.22 W/(m ² K) for MB-79N SI+
Resistance to wind load	class C5, EN 12210	class C1/B1, EN 12210

* - U_w for MB-79N SI fixed window 1300 × 2700 mm, glazing $U_g=0,5$ W/(m²K)

** - U_w for MB-79N SI operable window 1300 × 2700 mm, glazing $U_g=0,5$ W/(m²K)